



K. S. R. M. COLLEGE OF ENGINEERING

(UGC-AUTONOMOUS)

Kadapa, Andhra Pradesh, India – 516 005

Approved by AICTE, New Delhi & Affiliated to JNTUA, Ananthapuramu.

An ISO 14001:2004 & 9001:2015 Certified Institution



7.1.3 – Waste Management Photos Solid Waste Management –



K.S.R.M Administration Building, KSRM Hostel Rd, Andhra Pradesh 516003, India

Latitude 14.477783° Longitude 78.766007°

LOCAL 14:09:24 GMT 08:39:24 FRIDAY 11.11.2022 ALTITUDE 50 METER



K.S.R.M Administration Building, KSRM Hostel Rd, Andhra Pradesh 516003, India

Latitude 14.477762° Longitude 78.765989°

LOCAL 14:09:44 GMT 08:39:44 FRIDAY 11.11.2022 ALTITUDE 50 METER



K.S.R.M Administration Building, KSRM Hostel Rd, Andhra Pradesh 516003, India

Latitude 14.477771° Longitude 78.766229°

LOCAL 14:13:05 GMT 08:43:05 FRIDAY 11.11.2022 ALTITUDE 50 METER

Paper Waste Collecting from the Examination Branch

V. S. S. Mm/19
Principal

/karmce.ac.in

Follow Us:



/karmceofficial

PRINCIPAL
K.S.R.M. COLLEGE OF ENGINEERING
KADAPA-516005, (A.P.)



K. S. R. M. COLLEGE OF ENGINEERING

(UGC-AUTONOMOUS)

Kadapa, Andhra Pradesh, India – 516 005

Approved by AICTE, New Delhi & Affiliated to JNTUA, Ananthapuramu.

An ISO 14001:2004 & 9001:2015 Certified Institution



KSNR
lives on..



FQH8+256, KSRM Hostel Rd, Kadapa, Andhra Pradesh 516003, India

Latitude 14.477535° Longitude 78.765620°

LOCAL 14:08:11 GMT 08:38:11 FRIDAY 11.11.2022 ALTITUDE 49 METER



FQH8+256, KSRM Hostel Rd, Kadapa, Andhra Pradesh 516003, India

Latitude 14.477562° Longitude 78.765596°

LOCAL 14:55:08 GMT 09:25:08 FRIDAY 11.11.2022 ALTITUDE 49 METER




FQH8+256, KSRM Hostel Rd, Kadapa, Andhra Pradesh 516003, India

Latitude 14.477520° Longitude 78.765606°

LOCAL 14:55:53 GMT 09:25:53 FRIDAY 11.11.2022 ALTITUDE 49 METER

Paper Waste Collecting from the Central Library

U.S.S. Mwalq
Principal

 /kasmce.ac.in

Follow Us:



/kasmceofficial

PRINCIPAL
K.S.R.M. COLLEGE OF ENGINEERING
KADAPA-516005, (A.P.)



K. S. R. M. COLLEGE OF ENGINEERING

(UGC-AUTONOMOUS)

Kadapa, Andhra Pradesh, India – 516 005

Approved by AICTE, New Delhi & Affiliated to JNTUA, Ananthapuramu.

An ISO 14001:2004 & 9001:2015 Certified Institution



Twin Dustbins at Various Places –



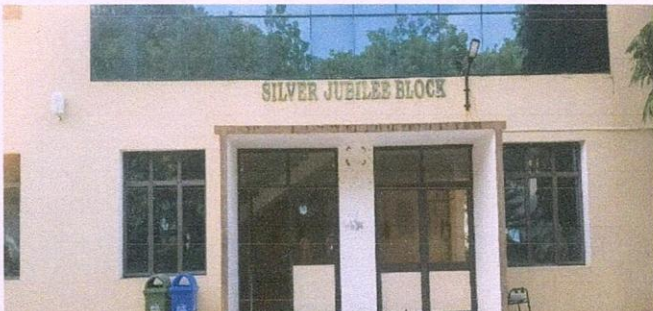
Compute Science and Civil Engineering, KSRM Hostel Rd, Andhra Pradesh 516003, India
Latitude 14.477800° Longitude 78.765302°
LOCAL 14:32:31 GMT 09:02:31 WEDNESDAY 30.11.2022 ALTITUDE 49 METER

At Civil Engineering Block



FQI8-256 KSRM Hostel Rd, Kadapa, Andhra Pradesh 516003, India
Latitude 14.477635° Longitude 78.765629°
LOCAL 14:34:04 GMT 09:04:04 WEDNESDAY 30.11.2022 ALTITUDE 49 METER

At Central Library



FQI8-W5F, Krishnapuram, Andhra Pradesh 516003, India
Latitude 14.476700° Longitude 78.765379°
LOCAL 14:36:53 GMT 09:06:53 WEDNESDAY 30.11.2022 ALTITUDE 50 METER

At Silver Jubilee Block



Mechanical Engineering Block, KSRM Hostel Rd, Kadapa, Andhra Pradesh 516003, India
Latitude 14.477061° Longitude 78.766267°
LOCAL 14:39:36 GMT 09:09:36 WEDNESDAY 30.11.2022 ALTITUDE 49 METER

At Mechanical Block



FQI8-2HQ, Kadapa, Andhra Pradesh 516003, India
Latitude 14.477477° Longitude 78.766358°
LOCAL 14:41:32 GMT 09:11:32 WEDNESDAY 30.11.2022 ALTITUDE 50 METER


At CRI



FQI8-84G, Krishnapuram, Andhra Pradesh 516003, India
Latitude 14.478171° Longitude 78.765620°
LOCAL 14:44:16 GMT 09:14:16 WEDNESDAY 30.11.2022 ALTITUDE 49 METER

At Main Building

V. S. S. Mmlk
Principal

 /kasmce.ac.in

Follow Us:



/kasmceofficial

PRINCIPAL
K.S.R.M. COLLEGE OF ENGINEERING
KADAPA-516005, (A.P.)



K. S. R. M. COLLEGE OF ENGINEERING

(UGC-AUTONOMOUS)

Kadapa, Andhra Pradesh, India – 516 005

Approved by AICTE, New Delhi & Affiliated to JNTUA, Ananthapuramu.

An ISO 14001:2004 & 9001:2015 Certified Institution



Liquid Waste Management –

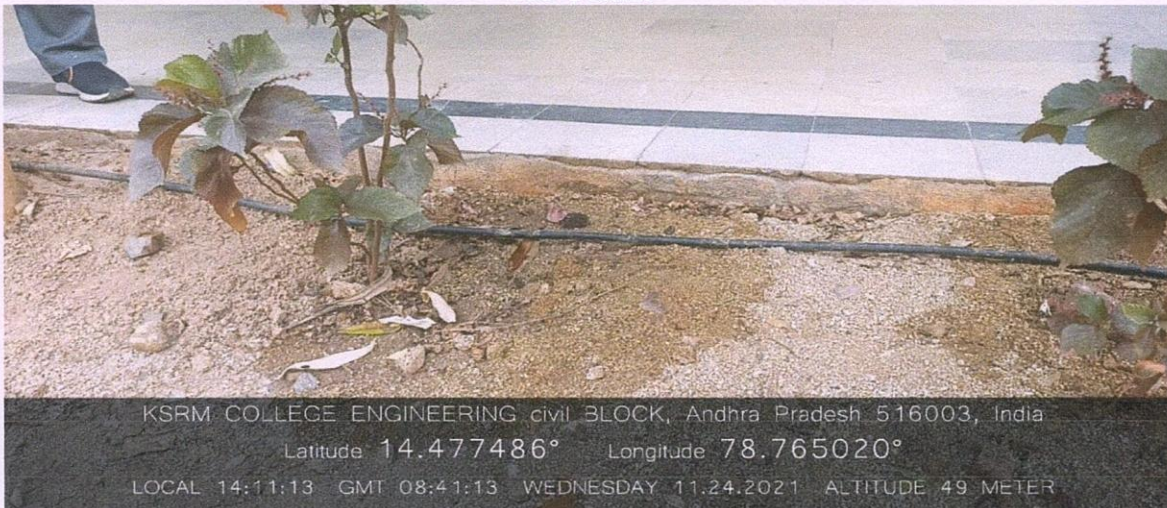


FQG8+W5F, Krishnapuram, Andhra Pradesh 516003, India

Latitude 14.476612° Longitude 78.765610°

LOCAL 13:41:17 GMT 08:11:17 WEDNESDAY 30.11.2022 ALTITUDE 49 METER

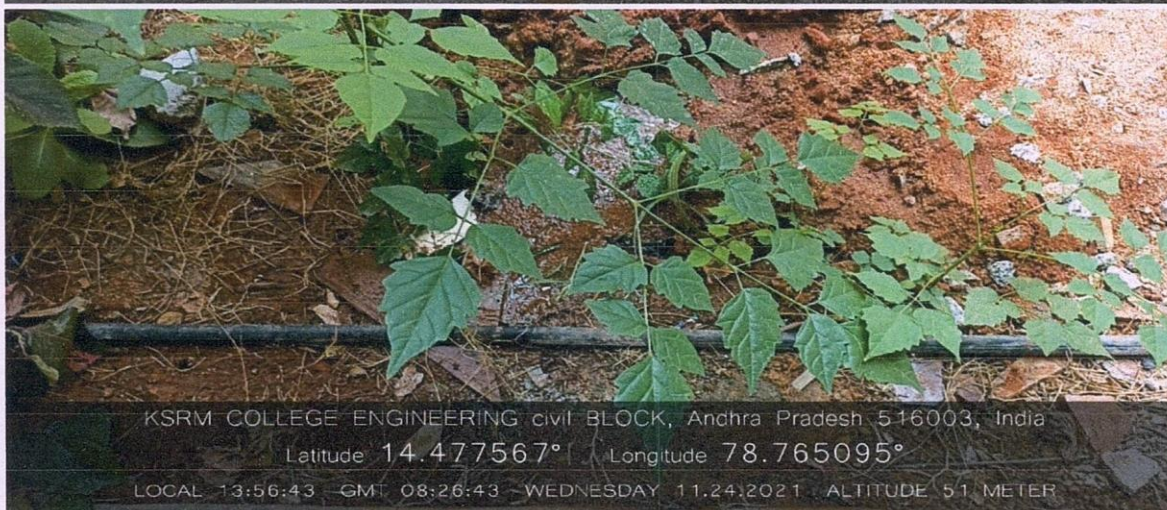
RO Plant



KSRM COLLEGE ENGINEERING civil BLOCK, Andhra Pradesh 516003, India

Latitude 14.477486° Longitude 78.765020°

LOCAL 14:11:13 GMT 08:41:13 WEDNESDAY 11.24.2021 ALTITUDE 49 METER




KSRM COLLEGE ENGINEERING civil BLOCK, Andhra Pradesh 516003, India

Latitude 14.477567° Longitude 78.765095°

LOCAL 13:56:43 GMT 08:26:43 WEDNESDAY 11.24.2021 ALTITUDE 51 METER

Reuse of Waste Water for Plantation

U.s.s. Mm19
Principal

 /kasmce.ac.in

Follow Us:



/kasmceofficial

PRINCIPAL
K.S.R.M. COLLEGE OF ENGINEERING
KADAPA-516005, (A.P.)



K. S. R. M. COLLEGE OF ENGINEERING

(UGC-AUTONOMOUS)

Kadapa, Andhra Pradesh, India – 516 005

Approved by AICTE, New Delhi & Affiliated to JNTUA, Ananthapuramu.

An ISO 14001:2004 & 9001:2015 Certified Institution



KSNR
lives on..

Biomedical Waste Management –



Krishnapuram, Thadigotla Chintakommadinne(M), FQH7+GHC, Kadapa Rd, Andhra Pradesh
516003, India

Latitude 14.479176° Longitude 78.764444°

LOCAL 13:34:21 GMT 08:04:21 TUESDAY 12.20.2022 ALTITUDE 47 METER

Incinerator Facility in the Senior Girls Hostel



Krishnapuram, Thadigotla Chintakommadinne(M), FQH7+GHC, Kadapa Rd, Andhra Pradesh 516003,
India

Latitude 14.479170° Longitude 78.764441°

LOCAL 14:10:47 GMT 08:40:47 TUESDAY 12.20.2022 ALTITUDE 47 METER


Sanitary Napkin Wending Machine in the Senior Girls Hostel

V. S. S. mm14

Principal

PRINCIPAL

K. S. R. M. COLLEGE OF ENGINEERING
KADAPA-516005, (A.P.)

 /ksrmce.ac.in

Follow Us:



/ksrmceofficial



K. S. R. M. COLLEGE OF ENGINEERING

(UGC-AUTONOMOUS)

Kadapa, Andhra Pradesh, India – 516 005

Approved by AICTE, New Delhi & Affiliated to JNTUA, Ananthapuramu.

An ISO 14001:2004 & 9001:2015 Certified Institution



E-Waste Management –



Compute Science and Civil Engineering, KSRM Hostel Rd, Andhra Pradesh 516003, India

Latitude 14.477592° Longitude 78.764999°

LOCAL 12:16:48 GMT 06:46:48 FRIDAY 25.11.2022 ALTITUDE 49 METER

Collection of E-Waste from Civil Engineering Department



K.S.R.M Administration Building, KSRM Hostel Rd, Andhra Pradesh 516003, India

Latitude 14.477866° Longitude 78.766052°

LOCAL 15:03:17 GMT 09:33:17 WEDNESDAY 21.12.2022 ALTITUDE 49 METER

Collection of E-Waste from Computer Science & Engineering Department



K. S. R. M. COLLEGE OF ENGINEERING

(UGC-AUTONOMOUS)

Kadapa, Andhra Pradesh, India – 516 005

Approved by AICTE, New Delhi & Affiliated to JNTUA, Ananthapuramu.

An ISO 14001:2004 & 9001:2015 Certified Institution



Hazardous Chemicals and Radioactive Waste Management –



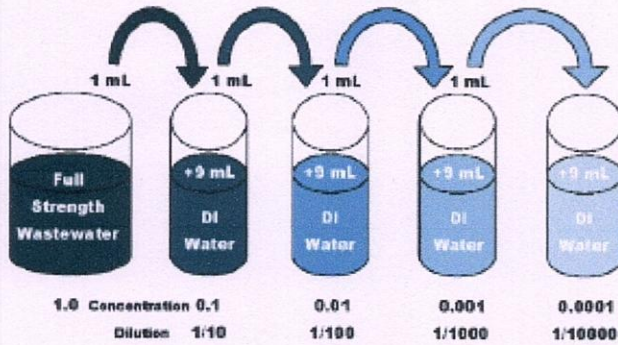
K. S. R. M. COLLEGE OF ENGINEERING

(UGC-AUTONOMOUS)

Kadapa, Andhra Pradesh, India – 516 005

Approved by AICTE, New Delhi & Affiliated to JNTUA, Ananthapuramu.

An ISO 14001:2004 & 9001:2015 Certified Institution



Instructions to the Students

1. Wash all the glassware thoroughly, before and after use.
2. Dispose the waste sample (i.e., after adding chemicals) only after diluting at least in the ratio of 1:1.
3. Wash your hands as soon as the experiment is completed.
4. Try not to touch any concentrated acids / chemicals with bare hands
5. Report any spill to the instructor immediately.
6. Wash any spill on any body parts with plenty of water.

Staff In-Charge
Environmental Engineering Laboratory

V. S. S. Mm 15

Principal

/ksrmce.ac.in

Follow Us:



/ksrmceofficial

PRINCIPAL
K.S.R.M. COLLEGE OF ENGINEERING
KADAPA-516005, (A.P.)